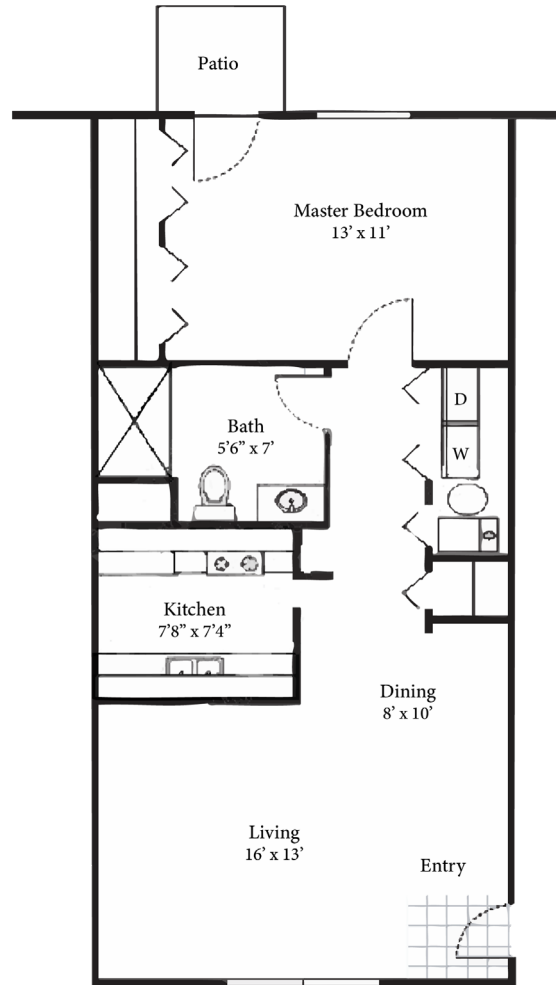




# THE CROSSINGS AT NOBLESVILLE

SENIOR LIVING

A TUTERA SENIOR LIVING COMMUNITY



## ONE BEDROOM

900 Sq. Ft.

### NOTES:

---

---

---

### THE CROSSINGS AT NOBLESVILLE

7235 Riverwalk Way N. | Noblesville, IN 46062  
Independent Living | Assisted Living | Memory Care





# THE CROSSINGS AT NOBLESVILLE

SENIOR LIVING

A TUTERA SENIOR LIVING COMMUNITY

**317-770-0011**

7235 Riverwalk Way N. | Noblesville, IN 46062

Independent Living | Assisted Living | Memory Care

[CROSSINGSATNOBLESVILLEBYTUTERA.COM](http://CROSSINGSATNOBLESVILLEBYTUTERA.COM)

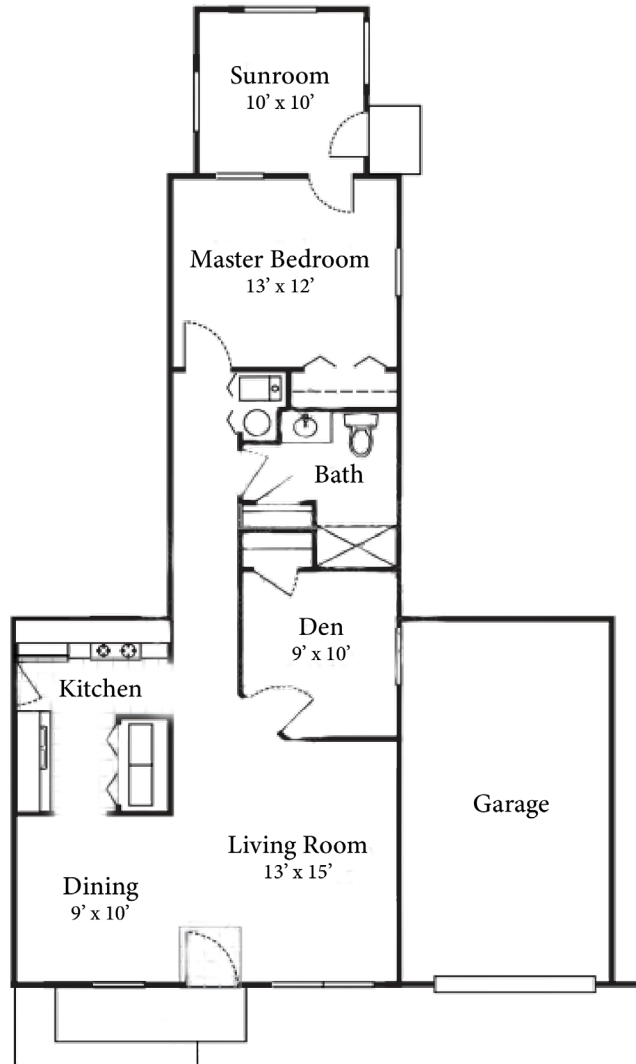




# THE CROSSINGS AT NOBLESVILLE

SENIOR LIVING

A TUTERA SENIOR LIVING COMMUNITY



## ONE BEDROOM WITH DEN & ATTACHED GARAGE

1,270 Sq. Ft.

NOTES:

---

---

---

### THE CROSSINGS AT NOBLESVILLE

7235 Riverwalk Way N. | Noblesville, IN 46062  
Independent Living | Assisted Living | Memory Care





# THE CROSSINGS AT NOBLESVILLE

SENIOR LIVING

A TUTERA SENIOR LIVING COMMUNITY

**317-770-0011**

7235 Riverwalk Way N. | Noblesville, IN 46062

Independent Living | Assisted Living | Memory Care

[CROSSINGSATNOBLESVILLEBYTUTERA.COM](http://CROSSINGSATNOBLESVILLEBYTUTERA.COM)



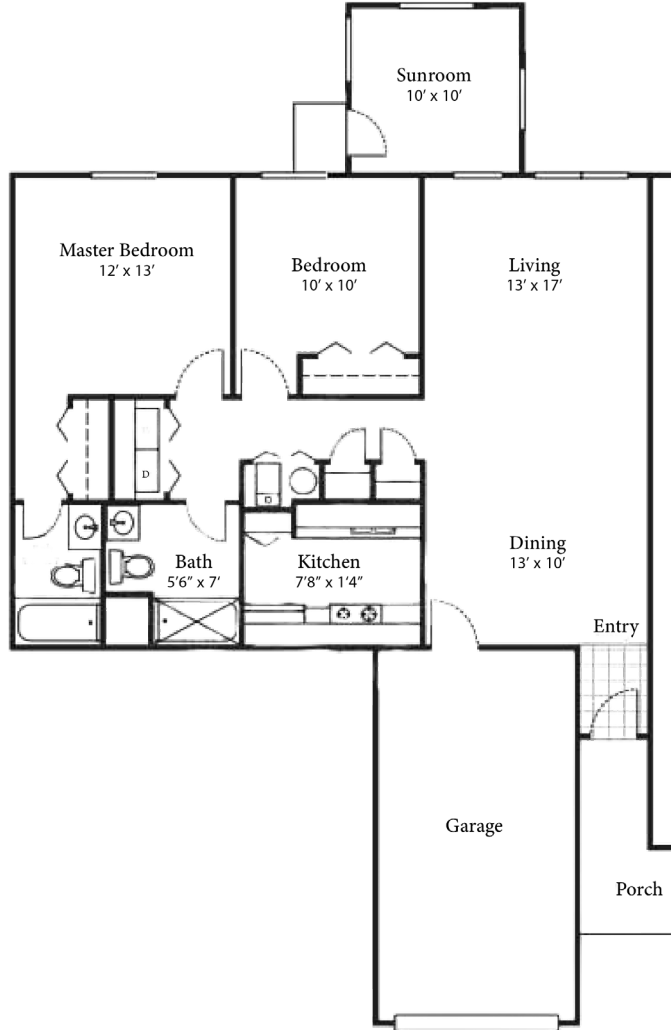
EQUAL HOUSING  
OPPORTUNITY



# THE CROSSINGS AT NOBLESVILLE

SENIOR LIVING

A TUTERA SENIOR LIVING COMMUNITY



## TWO BEDROOM, TWO BATH WITH SUNROOM & GARAGE

1,300 Sq. Ft.

NOTES:

---

---

---

### THE CROSSINGS AT NOBLESVILLE

7235 Riverwalk Way N. | Noblesville, IN 46062  
Independent Living | Assisted Living | Memory Care





# THE CROSSINGS AT NOBLESVILLE

SENIOR LIVING

A TUTERA SENIOR LIVING COMMUNITY

**317-770-0011**

7235 Riverwalk Way N. | Noblesville, IN 46062

Independent Living | Assisted Living | Memory Care

[CROSSINGSATNOBLESVILLEBYTUTERA.COM](http://CROSSINGSATNOBLESVILLEBYTUTERA.COM)

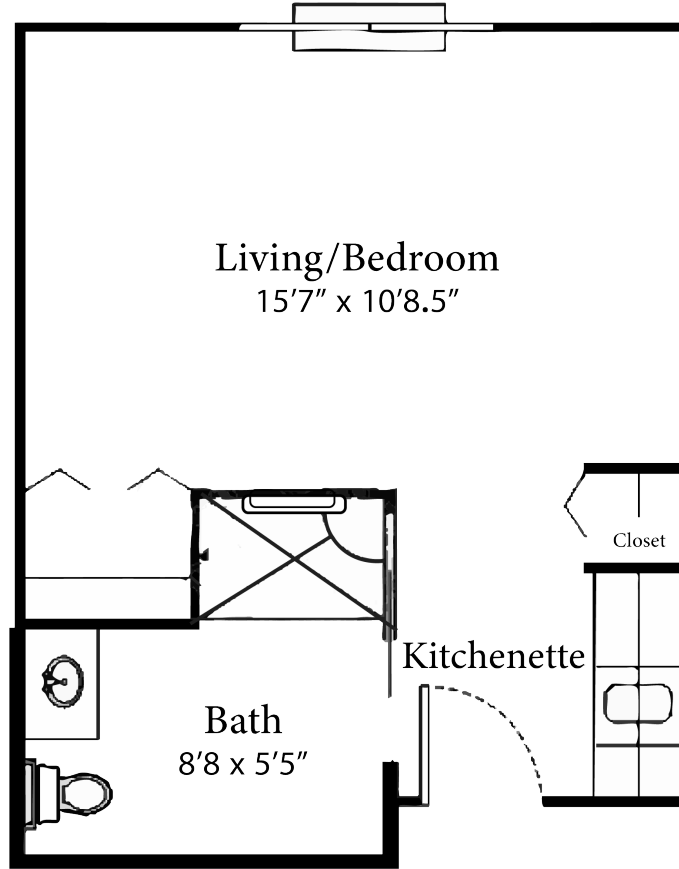




# THE CROSSINGS AT NOBLESVILLE

SENIOR LIVING

A TUTERA SENIOR LIVING COMMUNITY



## STUDIO

370 Sq. Ft.

NOTES:

---

---

---

**THE CROSSINGS AT NOBLESVILLE**

7235 Riverwalk Way N. | Noblesville, IN 46062  
Independent Living | Assisted Living | Memory Care





# THE CROSSINGS AT NOBLESVILLE

SENIOR LIVING

A TUTERA SENIOR LIVING COMMUNITY

**317-770-0011**

7235 Riverwalk Way N. | Noblesville, IN 46062

Independent Living | Assisted Living | Memory Care

[CROSSINGSATNOBLESVILLEBYTUTERA.COM](http://CROSSINGSATNOBLESVILLEBYTUTERA.COM)

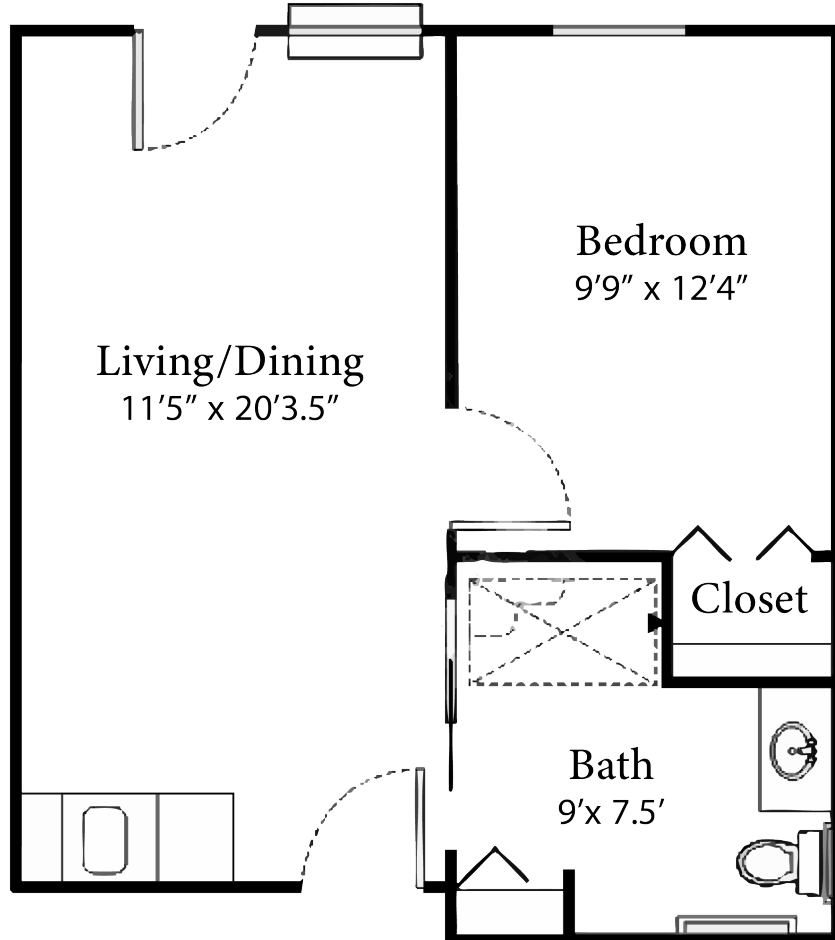




# THE CROSSINGS AT NOBLESVILLE

SENIOR LIVING

A TUTERA SENIOR LIVING COMMUNITY



## ONE BEDROOM

570 Sq. Ft.

### NOTES:

---

---

---

### THE CROSSINGS AT NOBLESVILLE

7235 Riverwalk Way N. | Noblesville, IN 46062  
Independent Living | Assisted Living | Memory Care





# THE CROSSINGS AT NOBLESVILLE

SENIOR LIVING

A TUTERA SENIOR LIVING COMMUNITY

**317-770-0011**

7235 Riverwalk Way N. | Noblesville, IN 46062

Independent Living | Assisted Living | Memory Care

[CROSSINGSATNOBLESVILLEBYTUTERA.COM](http://CROSSINGSATNOBLESVILLEBYTUTERA.COM)

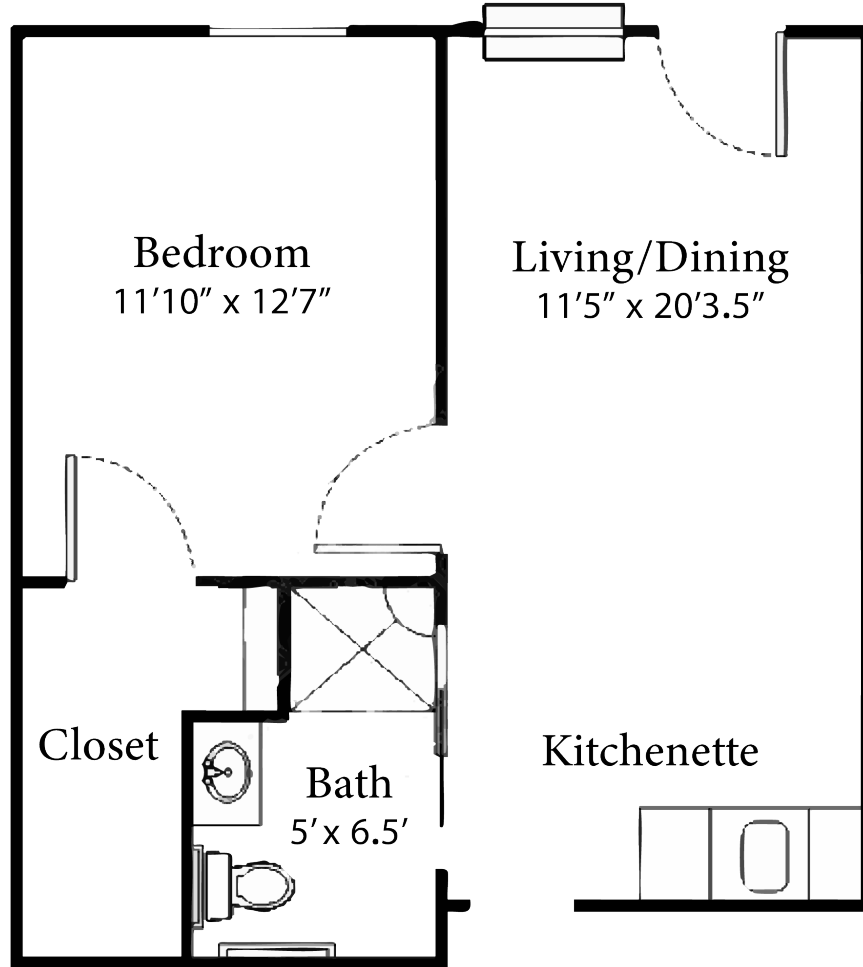




**THE CROSSINGS  
AT NOBLESVILLE**

SENIOR LIVING

A TUTERA SENIOR LIVING COMMUNITY



## ONE BEDROOM WITH WALK-IN CLOSET

570 Sq. Ft.

NOTES:

---

---

---

**THE CROSSINGS AT NOBLESVILLE**

7235 Riverwalk Way N. | Noblesville, IN 46062  
Independent Living | Assisted Living | Memory Care





# THE CROSSINGS AT NOBLESVILLE

SENIOR LIVING

A TUTERA SENIOR LIVING COMMUNITY

**317-770-0011**

7235 Riverwalk Way N. | Noblesville, IN 46062

Independent Living | Assisted Living | Memory Care

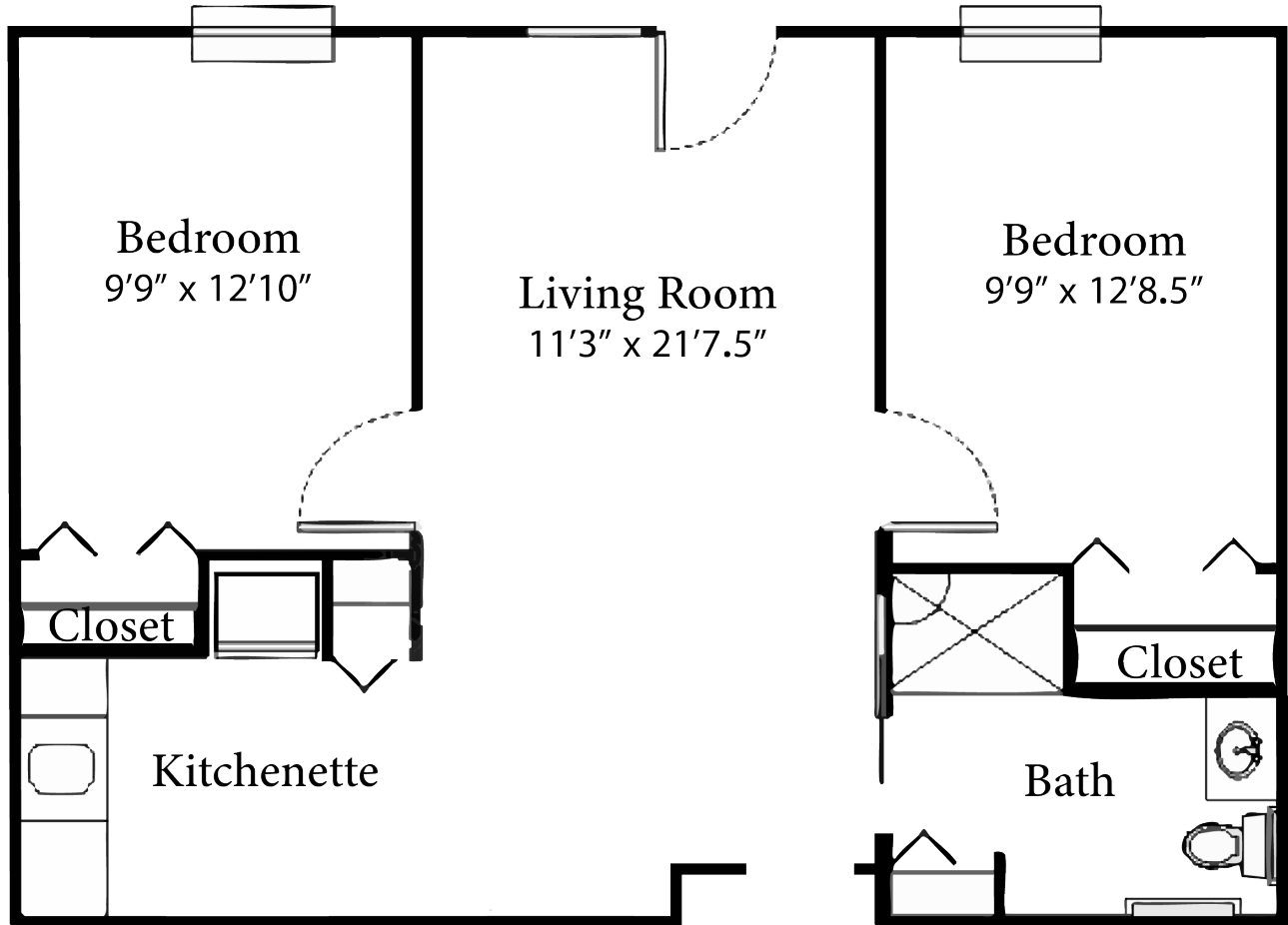
[CROSSINGSATNOBLESVILLEBYTUTERA.COM](http://CROSSINGSATNOBLESVILLEBYTUTERA.COM)





**THE CROSSINGS  
AT NOBLESVILLE**  
SENIOR LIVING

A TUTERA SENIOR LIVING COMMUNITY



## TWO BEDROOM

970 Sq. Ft.

**NOTES:**

---

---

---

**THE CROSSINGS AT NOBLESVILLE**

7235 Riverwalk Way N. | Noblesville, IN 46062  
Independent Living | Assisted Living | Memory Care





# THE CROSSINGS AT NOBLESVILLE

SENIOR LIVING

A TUTERA SENIOR LIVING COMMUNITY

**317-770-0011**

7235 Riverwalk Way N. | Noblesville, IN 46062

Independent Living | Assisted Living | Memory Care

[CROSSINGSATNOBLESVILLEBYTUTERA.COM](http://CROSSINGSATNOBLESVILLEBYTUTERA.COM)

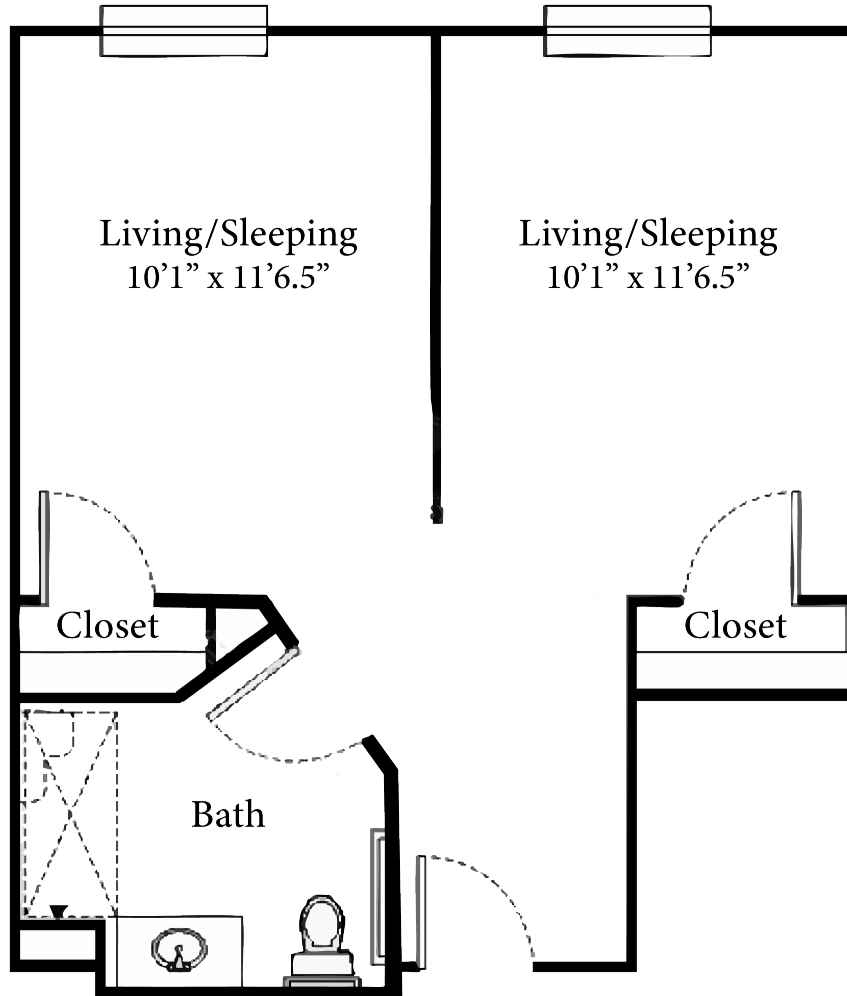




# THE CROSSINGS AT NOBLESVILLE

SENIOR LIVING

A TUTERA SENIOR LIVING COMMUNITY



## COMPANION SUITE

XX Sq. Ft.

### NOTES:

---

---

---

### THE CROSSINGS AT NOBLESVILLE

7235 Riverwalk Way N. | Noblesville, IN 46062  
Independent Living | Assisted Living | Memory Care





# THE CROSSINGS AT NOBLESVILLE

SENIOR LIVING

A TUTERA SENIOR LIVING COMMUNITY

**317-770-0011**

7235 Riverwalk Way N. | Noblesville, IN 46062

Independent Living | Assisted Living | Memory Care

[CROSSINGSATNOBLESVILLEBYTUTERA.COM](http://CROSSINGSATNOBLESVILLEBYTUTERA.COM)



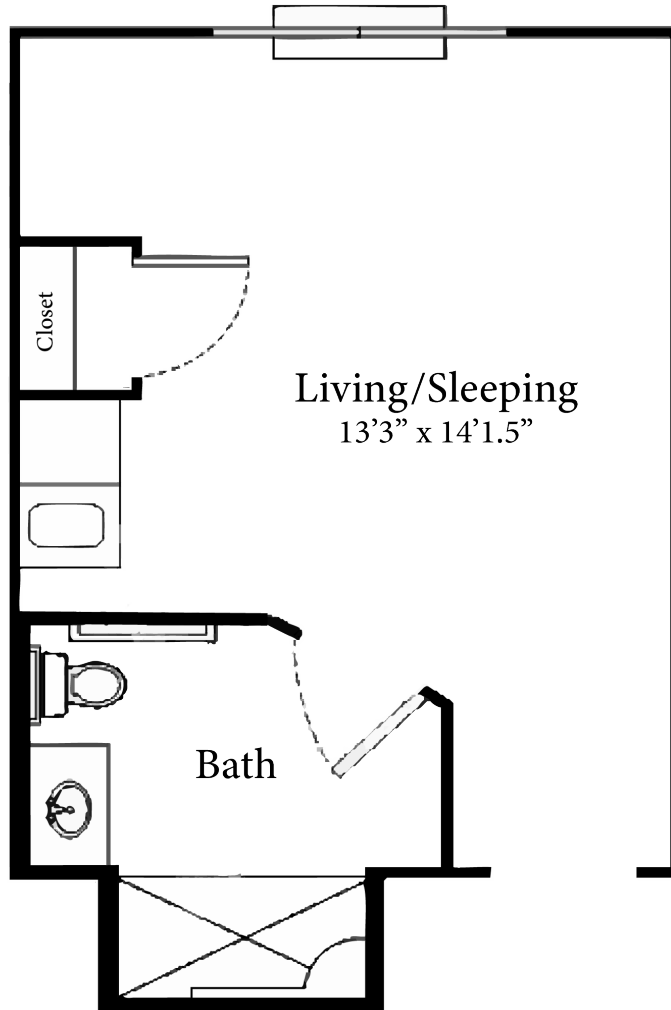
EQUAL HOUSING  
OPPORTUNITY



# THE CROSSINGS AT NOBLESVILLE

SENIOR LIVING

A TUTERA SENIOR LIVING COMMUNITY



## PRIVATE STUDIO

XX Sq. Ft.

### NOTES:

---

---

---

### THE CROSSINGS AT NOBLESVILLE

7235 Riverwalk Way N. | Noblesville, IN 46062  
Independent Living | Assisted Living | Memory Care





# THE CROSSINGS AT NOBLESVILLE

SENIOR LIVING

A TUTERA SENIOR LIVING COMMUNITY

**317-770-0011**

7235 Riverwalk Way N. | Noblesville, IN 46062

Independent Living | Assisted Living | Memory Care

[CROSSINGSATNOBLESVILLEBYTUTERA.COM](http://CROSSINGSATNOBLESVILLEBYTUTERA.COM)

